



STEPHENSON BROWNE

Tilstock Road, Whitchurch

SY13 2BY



Prices From £313,995

Description

Ennerdale, Tilstock Road, Whitchurch, Shropshire, SY13 2BY is a thoughtfully designed three-bedroom home, ideal for modern family living. At the heart of the property is a bright open-plan kitchen and dining area, complete with French doors leading out to the garden, creating a light and welcoming space perfect for both everyday life and entertaining. The ground floor also benefits from a spacious dual-aspect lounge and a convenient separate cloakroom. Upstairs, the home offers an en suite main bedroom, a further double bedroom, a single bedroom, and a contemporary family bathroom, providing comfortable and practical accommodation throughout.

<https://www.barratthomes.co.uk/new-homes/dev-002633-talbot-place/plot-416-h8949416/#explore>





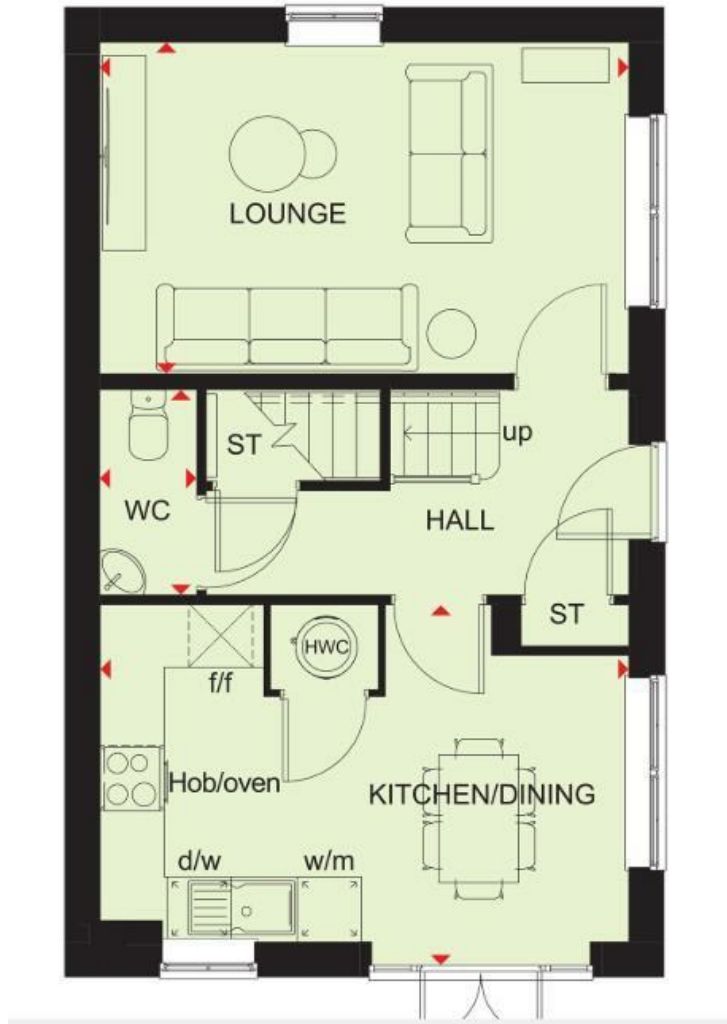
Viewing

Please contact our office using the details provided on the final page if you are interested in booking a viewing or require further information.



STEPHENSON BROWNE

Floorplans



Area Map



EPC Rating

Energy Efficiency Rating		Environmental Impact (CO ₂) Rating			
	Current	Potential		Current	Potential
Very energy efficient - lower running costs					
(92 plus) A			Very environmentally friendly - lower CO ₂ emissions		
(81-91) B			(92 plus) A		
(69-80) C			(81-91) B		
(55-68) D			(69-80) C		
(39-54) E			(55-68) D		
(21-38) F			(39-54) E		
(1-20) G			(21-38) F		
Not energy efficient - higher running costs					
England & Wales			England & Wales		
EU Directive 2002/91/EC			EU Directive 2002/91/EC		

NOTICE: Stephenson Browne for themselves and for the vendors or lessors of this property whose agents they are give notice that: (1) the particulars are set out as a general guideline only for the guidance of intending purchasers or lessees, and do not constitute, nor constitute part of, an offer or contract; (2) all descriptions, dimensions, references to condition and necessary permissions for use and occupation, and other details are given in good faith and are believed to be correct but any intending purchasers or tenants should not rely on them as statements or representations of fact but must satisfy themselves by inspection or otherwise as to the correctness of each theme; (3) no person in the employment of Stephenson Browne has any authority to make representation or warranty whatever in relation to this property. (4) fixtures & fittings are subject to a formal list supplied by the vendors solicitors. **Referring to:** Move with Us Ltd **Average Fee:** £123.64

T: 01782 625734 E: newcastle@stephensonbrowne.co.uk

www.stephensonbrowne.co.uk